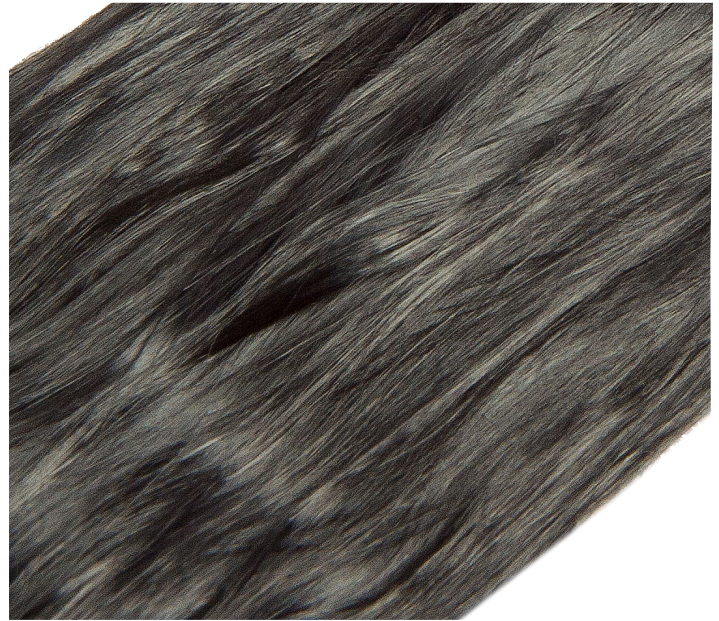


ZOLTEK™ OX CONTINUOUS TOW

DESCRIPTION

ZOLTEK OX continuous tow fibers are oxidized/stabilized PAN fibers (OPAN) that are inherently fire resistant, thermally stable, exhibit excellent resistance to chemicals and solvents and are electrically non-conductive. Available crimped or uncrimped, ZOLTEK OX continuous tow is suitable for stretch breaking into yarn, cutting into flock, crimping & cutting into staple fibers for nonwovens or yarn spinning.



MATERIAL PROPERTY	STANDARD DENSITY			HIGH DENSITY	
Density	1.37 g/cm ³ (0.0495 lb/in ³)			1.40 g/cm ³ (0.0506 lb/in ³)	
LOI	~45%			~55%	
Fineness	1.7 dTex	2.2 dTex	5.0 dTex	1.7 dTex	2.2 dTex
Tensile Strength	18.5-23 cN/tex (2.1 - 2.6 gpd) 240 - 300 MPa (34,800 psi)				
Fiber Diameter	12.5μ	14μ	22μ	12.5μ	14μ
Filament Count	300K		160K	300K	
Elongation to Break	22% - 28%				
Format	Uncrimped				

FIBER PROPERTIES	
Density	1.36 g/cc min.
Diameter	12.5μ (1.7 dTex)
LOI	40%+
Color	Black
Resistivity	8x10 ⁸ ohms-cm

CHEMICAL COMPOSITION (%)	
Carbon Content	62
Nitrogen	21.5
Oxygen	12
Hydrogen	4.5
Sodium	< 0.1
Trace Metals	< 0.01

CHEMICAL RESISTANCE	
Strong Acids	Good
Weak Acids	Excellent
Strong Bases	Poor
Weak Bases	Good
Organic Solvents	Excellent

The properties listed in this datasheet do not constitute any warranty or guarantee of values. This information should only be used for the purposes of material selection. Please contact us for more details.

ZOLTEK™ OX CONTINUOUS TOW

TYPICAL PACKAGING

ZOLTEK OX Continuous Tow is pleated into plastic lined boxes weighing approximately 185kg (400lbs). Crimped tow available packaged in bales weighing approximately 430kg (950lbs).

CERTIFICATION

ZOLTEK OX Continuous Tow is manufactured in accordance with ZOLTEK's written and published data. A Certificate of Conformance is provided with each shipment.

SAFETY

Obtain, read, and understand the Material Safety Data Sheet (SDS) before use of this or any other ZOLTEK product.