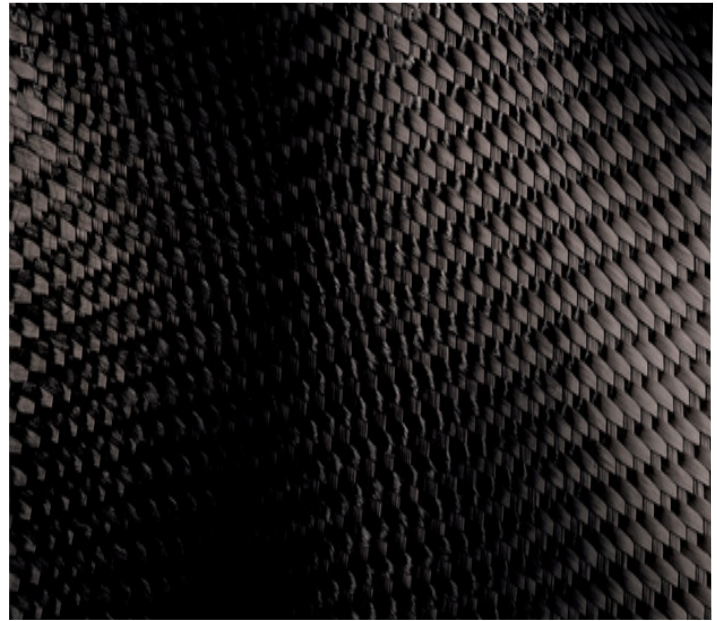


ZOLTEK™ PX35 WOVEN CARBON FABRICS

DESCRIPTION

ZOLTEK PX35 Tow Weave Carbon Fabrics are produced from our ZOLTEK PX35 50K Continuous Tow Carbon Fiber. Quick composite part build-up is cost effectively achieved with our cosmetically attractive carbon fiber fabrics. Applications include large composite tooling parts and aesthetically appealing finished composite components.



MATERIAL OVERVIEW	P/TW28-50		SW48-50	
	SI	US	SI	US
Construction	Plain or Twill Weave		5 Harness Satin Weave	
Warp Yarn	1/cm	2.6/in	2/cm	5.1/in
Fill Yarn	1.5/cm	3.8/in	2.4/cm	6.1/in
Areal Weight	960 g/m ²	28 oz/yd ²	1,640 g/m ²	48.4 oz/yd ²
Width	1,270 mm	50 in	1,270 mm	50 in
Thickness	1.5 mm	0.055 in	2.38 mm	0.093 in
Roll Length	30 m	32.8 yd	25 m	27.3 yd
Yarn	ZOLTEK PX35 50K Tow with Epoxy Sizing at 1.5%			

TYPICAL PROPERTIES- CONTINUOUS TOW	SI	US
Tensile Strength	4,137 MPa	600 ksi
Tensile Modulus	242 GPa	35 msi
Elongation	1.5%	1.5%
Electrical Resistivity	0.00155 ohm-cm	0.00061 ohm-in
Density	1.81 g/cc	0.065 lb/in ³
Fiber Diameter	7.2 microns	0.283 mils
Carbon Content	95%	95%

The properties listed in this datasheet do not constitute any warranty or guarantee of values. This information should only be used for the purposes of material selection. Please contact us for more details.



ZOLTEK™ PX35 WOVEN CARBON FABRICS

TYPICAL PACKAGING

Wound on a cardboard cone, sealed in polyethylene bag, and placed in a cardboard box.

CERTIFICATION

ZOLTEK PX35 Fabrics are manufactured in accordance with ZOLTEK's written and published data. A Certificate of Conformance is provided with each shipment.

SAFETY

Obtain, read, and understand the Material Safety Data Sheet (SDS) before use of this or any other ZOLTEK product.